

ifm

Trade Waste Monitoring

Optimise Waste Management with Advanced Monitoring Solutions



Streamline Waste Management with Advanced Solutions



Effective trade waste management is crucial for businesses aiming to minimise environmental impact, comply with regulations, and optimise operational efficiency. However, traditional waste management practices often lack real-time insights, leading to inefficiencies and compliance issues. Enter ifm's Trade Waste Monitoring application package—a comprehensive solution designed to revolutionise waste management through advanced monitoring and analytics.

With ifm's cutting-edge technology and expertise in industrial automation, you can monitor, analyse, and optimise trade waste generation, ensuring compliance, minimising environmental impact, and maximising operational efficiency.

To more about ifm's Solutions:

Phone 1300 365 088

Email sales.au@ifm.com

ifm efector pty ltd.

**Suite 3 - 745 Springvale Road
Mulgrave Vic 3170**



Real-time Monitoring

- Gain real-time insights into trade waste generation and disposal practices.
- Track waste volumes, composition, and disposal methods to optimise waste management strategies.

Compliance Monitoring

- Ensure compliance with regulatory requirements and environmental standards.
- Receive alerts and notifications for potential violations, allowing for immediate corrective actions.

Performance Optimisation

- Identify opportunities for waste reduction, recycling, and resource recovery.
- Optimise waste management practices to minimise costs and environmental impact.

Data Analytics

- Leverage advanced data analytics to identify trends, patterns, and areas for improvement.
- Make informed decisions to optimise waste management processes and achieve sustainability goals.

Ensure Compliance

- Stay compliant with regulatory requirements and environmental standards, avoiding penalties and reputation damage.

Optimise Efficiency

- Streamline waste management processes, minimise costs, and maximise operational efficiency.

Minimise Environmental Impact

- Reduce waste generation, promote recycling and resource recovery, and minimise environmental footprint.

Gain Insights

- Access real-time data and actionable insights to make informed decisions and continuously improve waste management practices.

ifm

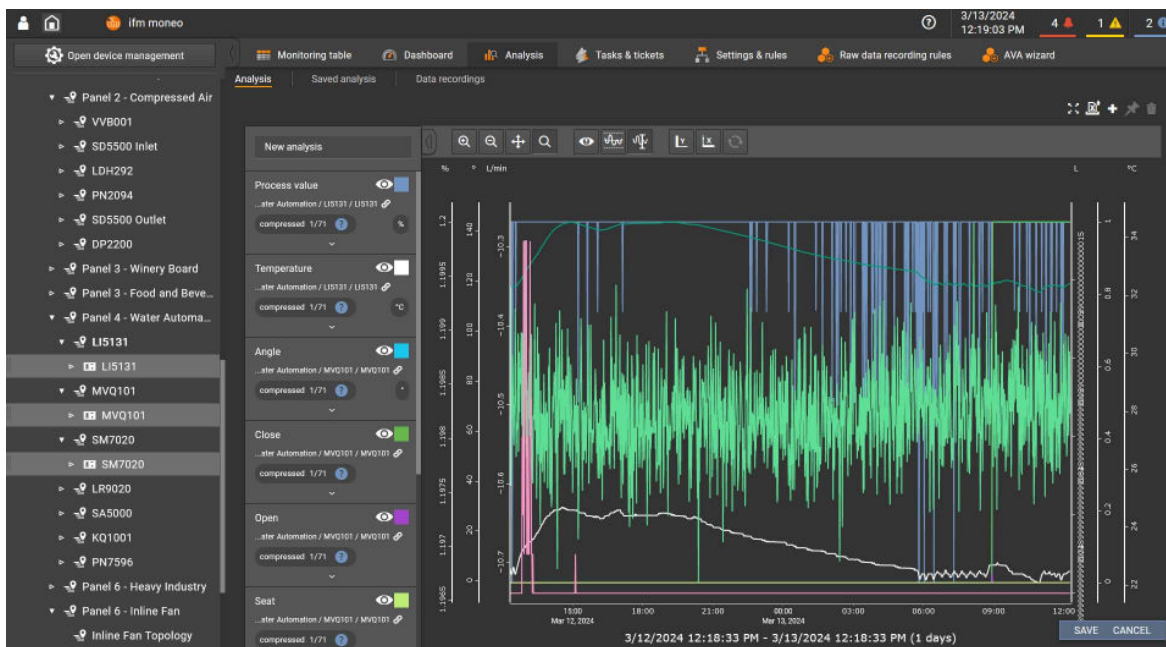
Trade Waste Monitoring

Optimise Waste Management with Advanced Monitoring Solutions



Partner with ifm for Sustainable Waste Management

Transform your waste management approach and unlock the full potential of your operations with ifm's Trade Waste Monitoring application package. Contact us today to learn more about how our advanced monitoring solutions can help you optimise waste management, ensure compliance, and achieve sustainability goals.



To more about ifm's Solutions:

Phone 1300 365 088

Email sales.au@ifm.com

ifm efector pty ltd.

Suite 3 - 745 Springvale Road

Mulgrave Vic 3170